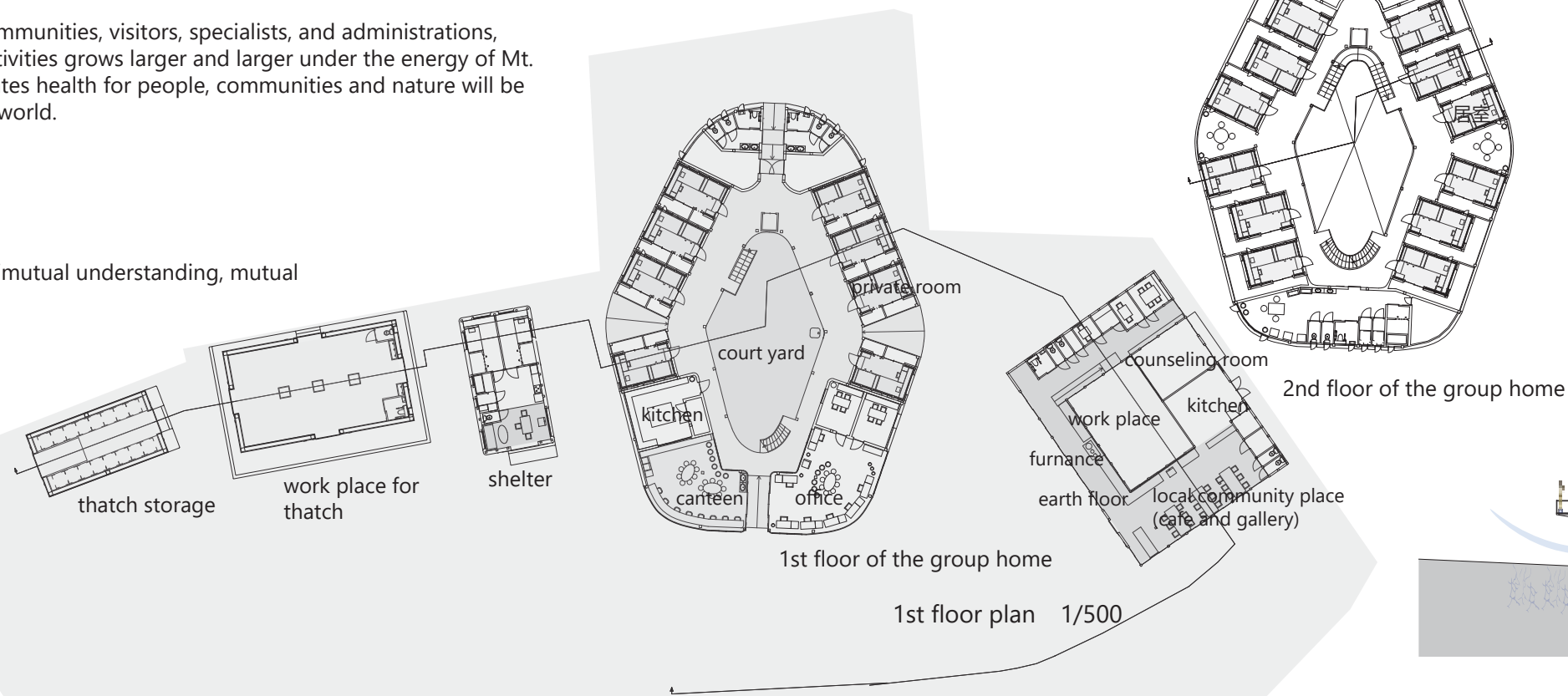


A welfare facility centre in Gotemba, Japan





A Venn diagram with three overlapping circles. The top circle is pink and labeled "users administrator". The bottom-left circle is blue and labeled "research center, welfare center, administrative, local organization, private companies". The bottom-right circle is green and labeled "local resident". The circles overlap in various combinations, representing the intersection of these groups.




Hypersonic sound in the existing environment

- (1) Sound of stepping on chips in the blueberry farm : 40,000 – 180,000Hz
- (2) Irrigation channel : 40,000 – 140,000Hz

Hypersonic sound in the planned environment

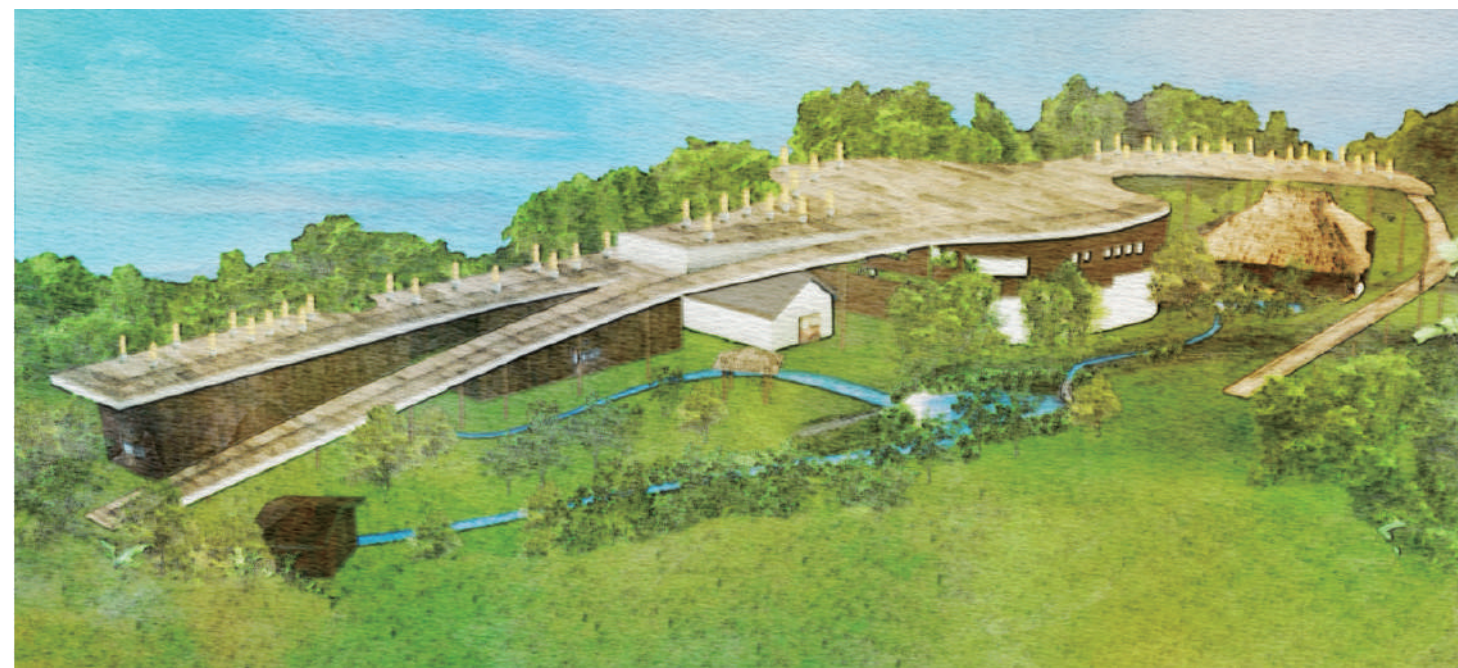
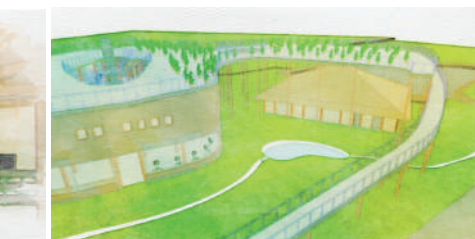
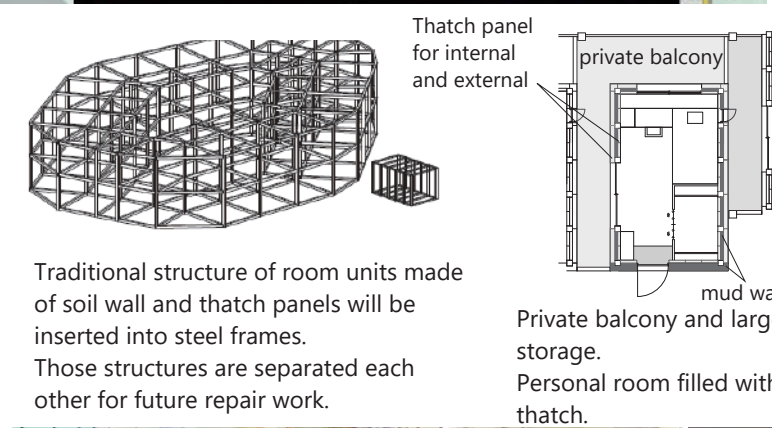
- (1) Watermill : 40,000 – 100,000Hz
- (2) Water channel : 40,000 – 140,000Hz
- (3) Aquarian Harp (Traditional Japanese echoing system) : 40,000 – 140,000Hz



Hypersonic sound in the planned environment

- (1) Watermill : 40,000 – 100,000Hz
- (2) Water channel : 40,000 – 140,000Hz
- (3) Aquarian Harp (Traditional Japanese echoing system) : 40,000 – 140,000Hz
- (4) Sound of Kariyasu on roof shaken in wind on the roof : 40,000 – 180,000Hz
- (5) Sound of Kariyasu mowing : 40,000 – 180,000Hz

*Measured by the hypersonic sound detector



Section 1/500

Sound of handling thatch is comfortable. It smells good, I can work on thatches for a long time unlike other activities. It is fun and relaxing, It makes me happy to learn that

"Kariyasu", a kind of thatch, is particularly useful as a material, as it is three times more durable than Japanese pampas grass. It used to grow in various areas in Japan, mainly in high altitude regions, but in recent years it has been eroded by pampas grass and become very valuable. For disability people, harvesting thatch precisely with exact quantity in the wild thatch field is a kind of difficult and danger sometimes, therefore, we designed planters of "Kariyasu" on the main roof for users to grow it safely and harvest easily every autumn as materials for repairing and maintaining the facility and making products to be support of disability people. The cultivation of "Kariyasu" on the architecture helps global warming issues, making hypersonic sound effect and also brings a new landscape to the area.

