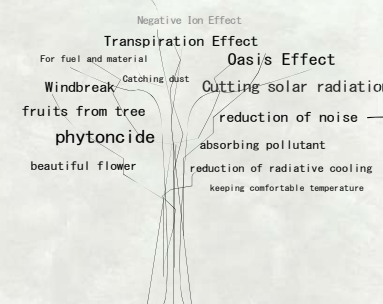


ko ba ya shi 木屋林

live with nature...

Competition for sustainable vacation house in country side of Japan.
 This site is originally rich forest which has micro climate and high diverse creatures. There are many varieties of trees, flowers, grasses and so on. They make rich diversity of ecosystem and have coordinated light and wind by trees.
 Each day has each climate by season and weather. We human also have own optimal environment, temperature, lightness, air circulation and humidity. Because of height difference of each room, they have different micro climate too.
 House holder family can choose each room according to their comfortable and suitable place at any time. They don't need air conditioner or heating. This house can live together with nature and people.
 This is the beautiful scene that people live with nature for their comfortable relationship each other.

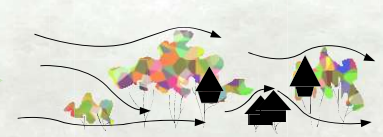
function of green



diagram



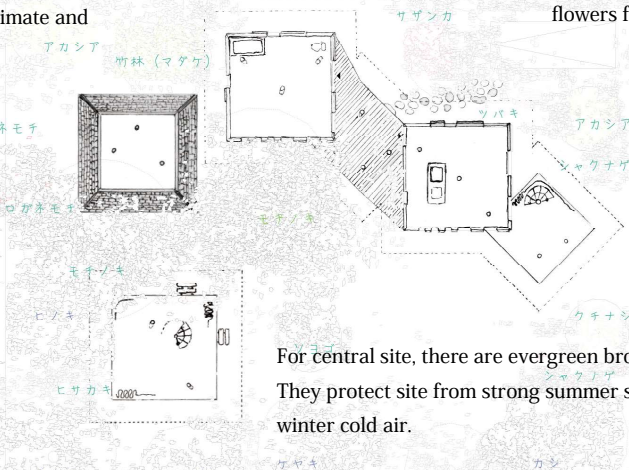
smooth tree canopy has filter efficient for coordination of environment



This plan makes this coordinated micro climate by little houses and trees

There are evergreen trees from north to west. They create comfortable micro climate and protect site from seasonal wind.

For east site, there are many kinds of flowers from season.

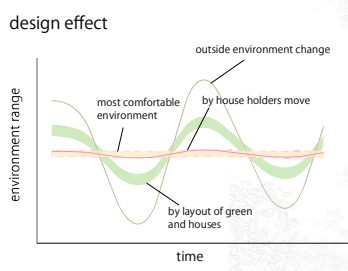


For central site, there are evergreen broadleaf trees. They protect site from strong summer sunlight and winter cold air.

For south and west site, there are high deciduous broadleaf trees.

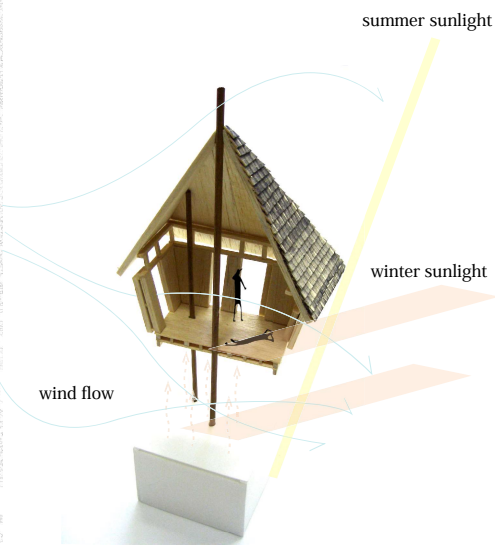
In summer, they can protect site from strong sunlight and get wind to lower part. In winter, they lose their leaves and the site can get enough sunlight and they keep thermal in fallen leaves.

deciduous trees evergreen trees site plan

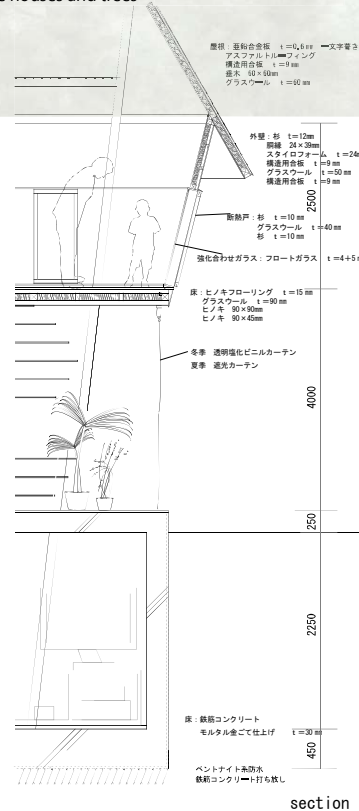


target by using seasonal micro climate

against	season	summer	winter	kind of tree
sunlight	protect	get	deciduous broadleaf	
wind	get	protect	deciduous, evergreen	
geothermal energy	get cooler	got warmer	deciduous broadleaf	
humidity	dry	keep	evergreen	



In summer, getting cooler by wind.
 In winter, getting warmer by transparent membrane.



winter

summer

seasonal life style by house with micro climate